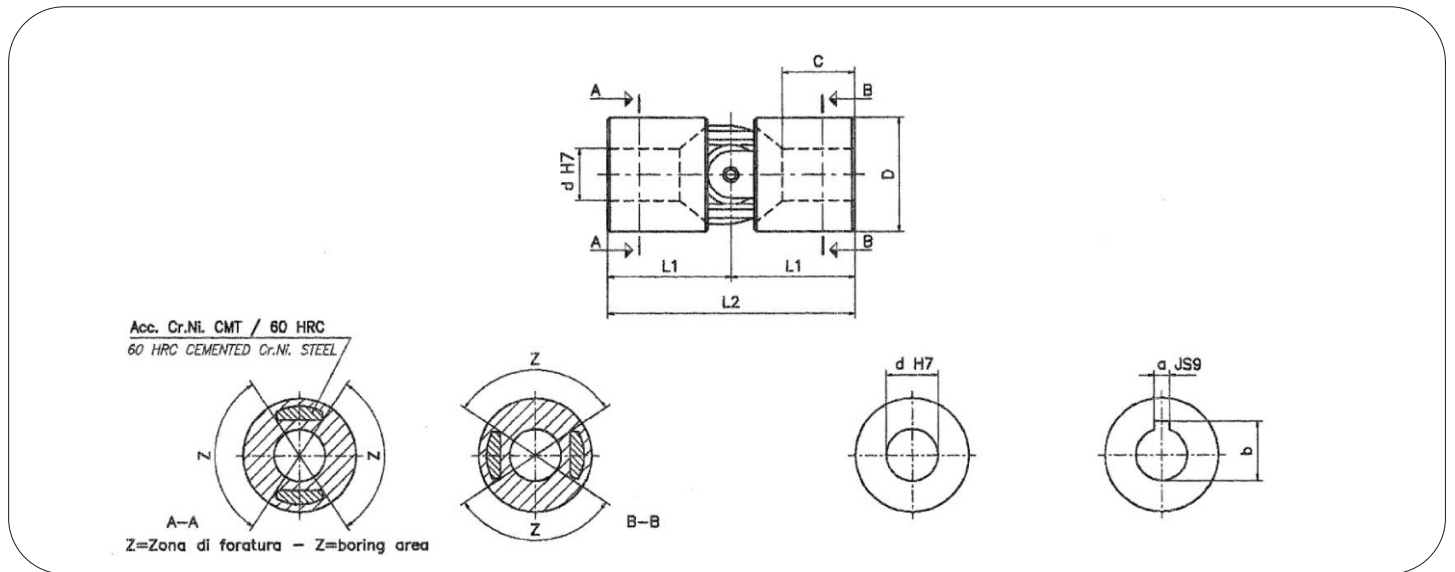




- Nucleo e forcelle integrali in acc. Cr. Ni. Cementato e temperato  
HRC  $\geq 60$ , R  $\geq 200$  Kg/mm<sup>2</sup>  
*Central block and forks from one piece of Nickel Chrome steel cemented and hardened HRC  $\geq 60$ , R  $\geq 200$  Kg/sq.mm.*
- Elevata resistenza usura, lunga durata.  
*High wear resistance, long life.*
- Prelubrificati. Ingrassatore incorporato.  
*Pre-lubricated. Graser built-in.*
- Angolo max: 45°. Giri max. 1000/min.  
*Max angle: 45°. Max speed 1000 R.P.M.*
- Esecuzioni speciali a richiesta.  
*Special executions on request.*



Mod. Type	Codice / Code	d	D	L2	L1	C	Codice / Code	Codice / Code	a	b	Peso Weight Kg
01S	SSOS 0600	6	16	34	17	9	—	—	—	—	0,05
02S	SSOS 0800	8	18	40	20	11	—	—	—	—	0,06
03S	SSOS 1000	10	22	48	24	14	SSOS 101C	SSOS 102C	3	11,4	0,11
04S	SSOS 1200	12	26	56	28	16	SSOS 121C	SSOS 122C	4	13,8	0,17
05S	SSOS 1400	14	29	60	30	17	SSOS 141C	SSOS 142C	5	16,3	0,22
1S	SSOS 1600	16	32	68	34	20	SSOS 161C	SSOS 162C	5	18,3	0,32
2S	SSOS 1800	18	37	74	37	21	SSOS 181C	SSOS 182C	6	20,8	0,47
3S	SSOS 2000	20	42	82	41	23	SSOS 201C	SSOS 202C	6	22,8	0,67
4S	SSOS 2200	22	47	95	47,5	25	SSOS 221C	SSOS 222C	6	24,8	1,00
5S	SSOS 2500	25	52	108	54	29	SSOS 251C	SSOS 252C	8	28,3	1,35
6S	SSOS 3000	30	58	122	61	34	SSOS 301C	SSOS 302C	8	33,3	1,85